



**S4[®] Universal
Mounting
System**

Photovoltaic Solutions for Every Roof

**Fast. Universal. Reliable.
Engineered for the next generation.**





Redefining Mounting Standards

S4 is a new generation of photovoltaic mounting systems, designed for complete or partial roof integration.

Our mission

Make solar installation faster, more reliable, and universally compatible with all panel types. From single clamps to compact EPDM seals, every detail is engineered for performance, durability, and ease of use.

ONE PLATE. INFINITE POSSIBILITIES.

Patented Universality, Engineered for Performance

With S4 Mounting System's patented universal base plate, you streamline the entire photovoltaic mounting process.

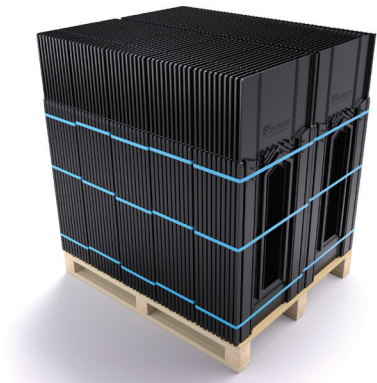
Designed to fit all panel sizes both portrait and landscape, it eliminates the complexity of managing multiple part references. A single component, compatible with all configurations, means reduced inventory, optimized logistics, and faster installations.

This patented system is the result of rigorous engineering, built to deliver long-term performance, reliability, and simplicity.

Beyond eliminating layout errors and compatibility issues, it enables significant savings at every stage of the project.

Fewer components, shorter installation times, and simplified stock management.

- Fewer components.
- Fewer errors.
- Better performance.



With S4's lateral extension rails, you're free to design your layout without constraints.
Adapt to any width no redesign needed. It's freedom made simple.



S4 Mounting System: the smart, certified, and patented solution for solar without compromise.

Durability exceeding 25 years
10 Year Warranty



ONLY 5 ACCESSORIES NEEDED

S4 Mounting System simplifies and accelerates photovoltaic installation like never before.

Thanks to a smart architecture made up of just 5 industrial-grade technical components, every project becomes a model of speed, cleanliness, and efficiency.

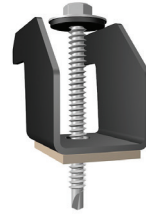
- Fewer parts, fewer errors, less time spent on the roof.
- Streamlined logistics, reduced stock, optimized turnover.
- Consistent performance, well-managed projects, satisfied customers.

Installers, distributors, partners everyone benefits.

S4 Mounting System delivers uncompromising efficiency, built to last.



STAINLESS STEEL SCREW FOR CLAMPS
6.5 X 60MM + EPDM WASHER



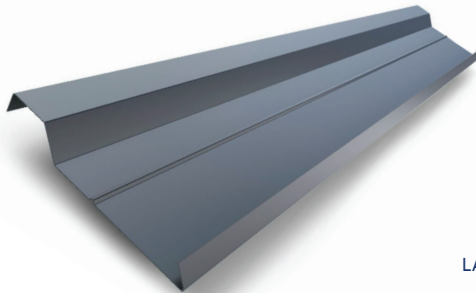
SINGLE CLAMP



FLASHING HOOKS



HEXAGONAL HEAD SCREW
6.5 x 25 MM FOR FIXING THE PLATE.



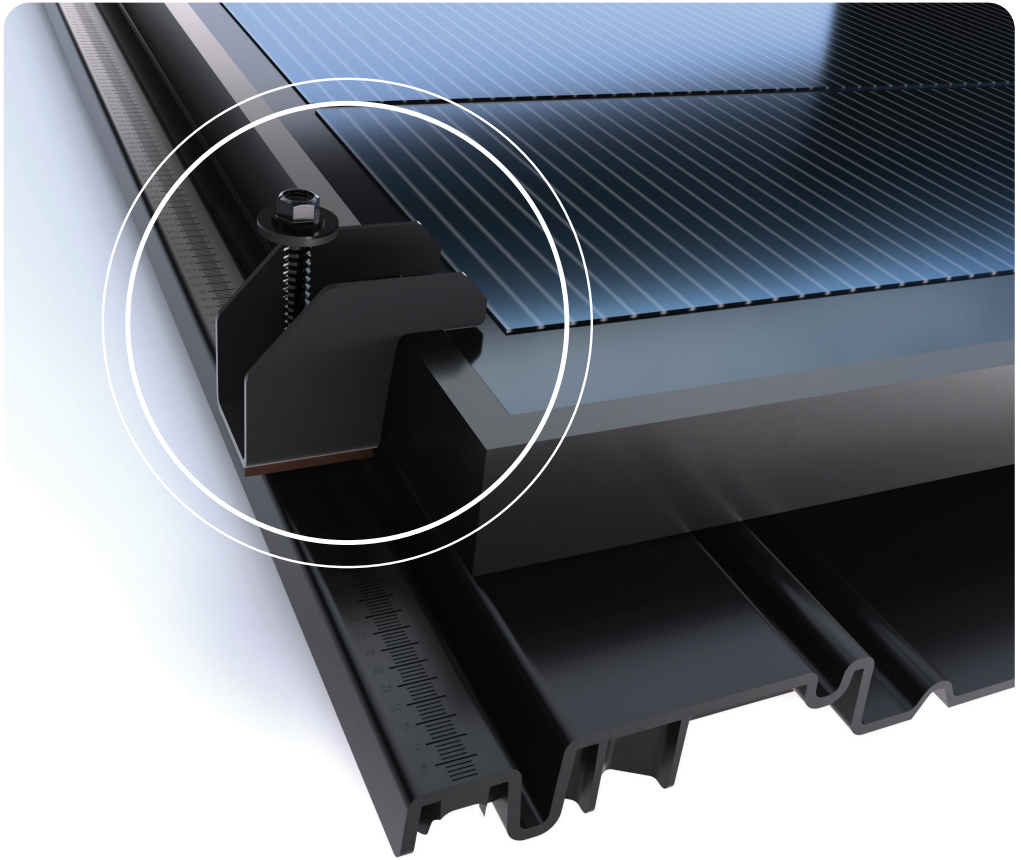
LATERAL FLASHING

SINGLE CLAMPS TECHNOLOGY

Engineered for Strength. The Power of Simplicity.

S4's single clamps deliver exceptional mechanical performance, with some of the highest pull-out values on the market.

By using one universal clamp throughout the installation, the system becomes more reliable, faster to install, and compatible with all panel types and roof configurations.



S4 Single clamp.

Fewer parts. Fewer errors. Better performance.

COMPACT EPDM SEALS

Proven Durability
Long-Lasting Tightness
Zero Maintenance

DURABILITY STARTS AT THE CORE

The reliability of the S4 system starts with the right materials.

Our seals are made of compact EPDM rubber (70 Shore A) a high-performance technical material specifically designed to:

- Maintain optimal compression under direct clamping pressure
- Avoid deformation, even after years of use

KEY TECHNICAL FEATURES:

- Hardness: 70 Shore A
- Temperature range: -40 °C to +120 °C
- Expected lifespan: Over 20 years
- Highly resistant to UV, ozone, weathering, and chemical exposure
- No long-term collapse or crushing
- Ensure long-lasting watertightness, even in extreme conditions

Unlike cellular (foam-type) seals, which are not designed to withstand direct mechanical pressure, our compact seals retain their shape, provide consistent support, and remain fully effective for the entire system lifespan.

A technical choice that guarantees long-term reliability, performance, and peace of mind.



EPDM 70 Shore A
High Resilience, Long-Lasting Sealing



Single Clamp
Enhanced Resistance, Secure Fixation.

ROOFING PRODUCTS

COMPLETE ROOFING COMPATIBILITY

S4 offers a complete and versatile range of roofing waterproofing products, designed to meet both installer preferences and the technical constraints of real-world construction sites.

Flashing tapes available in aluminum, lead, or EPDM, and offered in four colors: brown, terracotta red, dark brown, and black. Each tape features a high-performance butyl adhesive across its entire back surface, ensuring strong, long-lasting adhesion on all types of substrates and making installation easier.

Pre-compressed sealing joints, engineered to provide leak protection even in vulnerable areas or zones subject to expansion and movement.

Edge flashings, designed for lateral finishes and complex roof junctions, ensuring both visual consistency and long-term watertightness.

Under-roof membranes made of polypropylene or polyurethane, available in various thicknesses, permeability levels, fire ratings, and certifications (including BBA), to meet the most demanding regulations in France and internationally.

All components are tested for optimal integration with any type of roof covering: tile, slate, steel trays, and more.

S4 SealBand



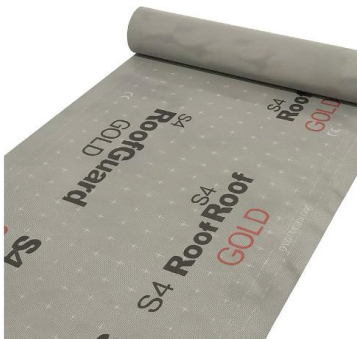
WATERPROOFING STRIP



EAVES EDGE FLASHING TAPE



PRECOMPRESSED
SEAL ROLL 20x40MM



S4 RoofGuard

BBA - ROOF UNDERLAY SCREEN
150 G/M²

QUALITY CONTROL & MATERIAL TESTING

1. Rigorous selection of technical polymers

At S4 Mounting System, reliability begins with the selection of highly specified raw materials technical, recyclable, and tailored to the demands of solar applications.

Each material batch is pre-approved before production through a certified Quality Control (COA), including the following tests, based on ISO and ASTM standards:

Property	Test Standard	Target Specification
Density	ISO 1183 / ASTM D792	1.10 – 1.15 g/cm ³
Melt Flow Index (MFI)	ISO 1133 (230 °C / 2.16 kg)	4.0 – 6.0 g/10 min
Ash content	ISO 3451	12 – 15%
Tensile strength	ISO 527 / ASTM D638	≥ 18 MPa
Tensile modulus	ISO 527	≥ 1300 MPa
Residual humidity	ISO 15512 / Karl Fischer	≤ 0.10%
Colour (if applicable)	ISO 11664 / ΔE measurement	ΔE ≤ [value to define]

These thresholds ensure consistent mechanical performance, dimensional stability, and resistance to outdoor conditions.

2. Enhanced testing at every stage

- **Pre-production:** Each batch is sampled and analysed by internal or external labs.
- **In-process:** Monitoring of critical parameters (temperature, pressure, cycles, etc.).
- **Post-production:** 1 part is tested every 2,000 units to confirm compliance.

3. Full traceability & archiving

Each production run is linked to a certified material batch, with documentation including:

- The material COA
- Internal test results
- A printed batch code on each product
- Full production history archive

S4 Mounting System Committed to uncompromising quality.

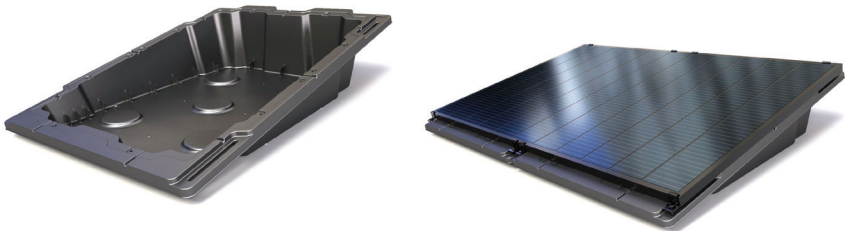


INNOVATION MAKES SOLAR SIMPLE

Beyond its flagship solution, S4 Mounting System offers a comprehensive range of universal mounting systems, engineered to adapt to all panel sizes, roof types, and installation formats.

This unmatched versatility not only streamlines logistics and boosts on-site efficiency, but also opens the door to new markets and business opportunities worldwide.

S4 *BaseFlow*

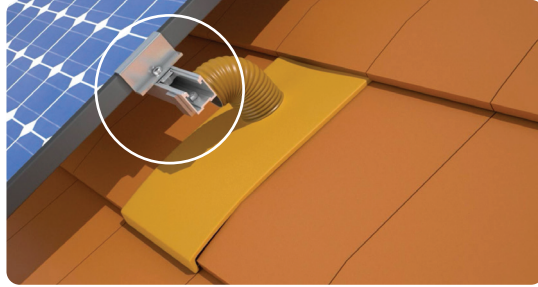


Ballasted photovoltaic tray for flat roof

Photovoltaic ballast
Air recovery – captures warm air under panels
Storage tray – for tools or components

Universal, compatible with all PV panel sizes

S4[®] *SupraMount*



The universal over-roof mounting system
One single hook for every roof type

S4[®] *SunFlow*



Multifunction ballasted tank
Photovoltaic ballast
Water recovery – Up to 600 L per panel
Air recovery – Captures warm air under panels
Storage tray – For tools or components
Feeder & drinking trough – Adaptable for agricultural app

Universal, compatible with all PV panel sizes

ORDER WITH EASE

Save time, reduce errors, and take full control of your projects with the S4 online platform, designed for solar professionals who demand efficiency and precision, whether you're a distributor or installer.

- **Instant order processing:** fully connected to our ERP, which is linked directly to our factories and logistics hubs for seamless, real-time execution.
- **Smart configuration tool:** enter your project parameters (roof surface, tilt, covering type...) or upload your plans (PDF, DWG, or BIM files) to receive the optimal configuration and a detailed list of required components, including references, quantities, and simplified layout plans.
- **Real-time tracking:** monitor your order status, stock availability, and delivery timelines for each item. Activate notifications to stay up to date automatically.
- **Full order history & resources:** access your quotes, previous orders, technical certificates, installation manuals, product datasheets, and declarations of conformity, all in one place.
- **Dedicated distributor/installer space:** access your custom pricing, discounts, marketing materials, commercial documents, and technical tools based on your profile.



S4 MOUNTING SYSTEM PLATFORM

With S4, you go from system design to installation through a secure, modern, and intuitive interface. A true all-in-one solution for fast, reliable, and professional project management in the photovoltaic industry.



UNITED KINGDOM

S4 MOUNTING SYSTEM UK LTD

1-75 Shelton Street- Covent Garden

London - WC2H 9JQ - UK

Company Number: 16612111

FRANCE

S4 MOUNTING SYSTEM FRANCE

55 Avenue Marceau 75016 Paris

TEL : +33 9 55 17 82 59

Mail: contact@S4mountingsystem.com

RCS: 911 110 773 RCS Paris

S4mountingsystem.com